

# Great Yarmouth

Great Yarmouth has a vast range of activities for families, the young at heart, couples and singles. There are many places to visit within walking distance from the guest house. Along the golden mile there is a pleasure beach, sea life centre, bowls, crazy golf and a model village. There is also a leisure centre, cinema and Britannia Pier which has many summer shows. There are amusement arcades and nearby horse racing, greyhound racing and banger car racing.

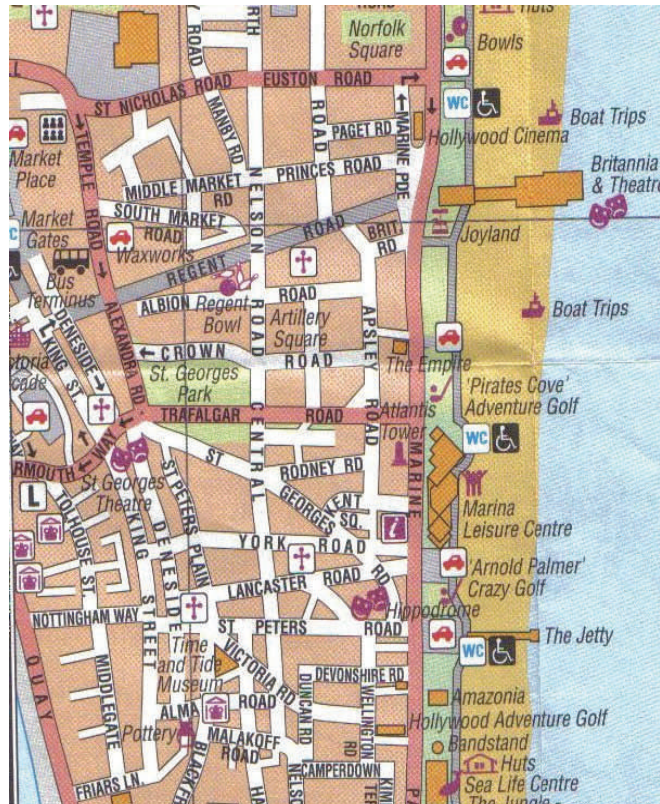
Just a short distance away is the town centre which has many shops and restaurants, an outdoor market is held on Wednesdays and Saturdays. There is also a ten pin bowling alley and Mecca bingo.

If you would like to discover Great Yarmouth's fascinating history there are many museums just a short distance away.

The city of Norwich and the Norfolk Broads National Park are just a short drive away.



## Directions



Coach park and railway station is within 5 minutes by car.

**Tudor**  
**House**  
Bed and Breakfast



11 Trafalgar Road,  
Great Yarmouth,  
Norfolk, NR30 2LD



Tel: 01493 855415

Web: [www.tudor-house.co.uk](http://www.tudor-house.co.uk)

E-mail: [info@tudor-house.co.uk](mailto:info@tudor-house.co.uk)

# Tudor House

Tudor House is a family run totally non smoking Guest House and it has been refurbished to a high standard. We have single, double, twin and family en-suite rooms. Some of the double rooms have king size beds.

Located on Trafalgar Road just 2 minutes from the beach and 5 minutes from the town centre. Whether you are looking for a relaxing holiday or in the area on business. A very warm welcome awaits you.

## Rooms

The family room has the benefit of a ceiling fan for those hot evenings.

All of the rooms have colour t.v's with Freeview and DVD Player

Tea & coffee making facilities

Radio Alarm Clock

Hairdryers

Complimentary Towels & Toiletries

Travel Cot available by request

Ironing Facilities available

## Rooms



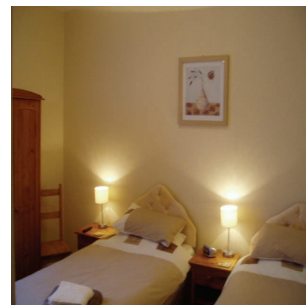
Dining Room



Family Room



Family Room



Twin or Double

All rooms are light and airy and tastefully decorated in neutral colours

## Dining

Breakfast is served between 8.15-9am. Should you require it earlier this can be arranged.

Packed lunches and evening meals are available by request

Evening Snack Menu

High Chair Available

## Prices

Prices range from £25.00-£85.00 per room per night. We ask for a non refundable deposit payable by credit or debit card of 100% of the first night at the time of booking, this will be deducted from your final bill and the balance is due on arrival.

Discounts given for bookings of 7 nights or more.

One night bookings must be paid for in full at the time of booking.

Minimum two night stays on bank holidays.

See our website for directions, terms, the access statement and booking information. Please contact us if you would like a copy.

We accept the following cards:

